



**KISC Staff  
Housing  
Fundraising**

# 100 YEARS OF INSPIRING YOUNG PEOPLE TO HELP CREATE A BETTER WORLD

*Set in the heart of the Swiss Alps, Kandersteg International Scout Centre (KISC), the World Scout Centre, brings together young people from different nationalities, cultures, and backgrounds to experience high adventure, share their lives, and help create a better world.*

## MAKE A DIFFERENCE IN THE PERMANENT MINI JAMBOREE EXPERIENCE.

Over a million scouts have visited KISC since its creation and have lived its values on their return home to make their world a little better than they found it.

Supporting KISC in its centenary year offers a unique opportunity to us all to celebrate its achievements, secure its future and share its vision.

Support KISC now to be ready for the future and choose any of the options presented in this brochure. Your support for financing the building of additional permanent staff quarters, will help KISC sustainably, because using operational funds each year to rent accommodation on the outside market, would no longer be required. This saving can then be used to support funding of the programme offered to the visiting scout guests. And this on an annual basis into the future. Support us now.

### PROJECT LOCATION



## FUNDRAISING OPTIONS

### • KISC Centennial Medallion donors

Benefits	US\$ 1'000	US\$ 3'000	US\$ 5'000
Medallion	✓	✓	✓
Wall of Fame		✓	✓
KISC Life Membership			✓
Train transport from Zurich or Geneva airports to Kandersteg			✓
Board and lodging during stay at KISC			✓

### • Sponsored rooms donors

A very special opportunity exists for individuals wishing to have 'their own room' exclusively dedicated to them.

Benefits	US\$ 50'000
Metal name plate on the room entrance, or in the room one a special in-room plaque	✓
Wall of Fame	✓
KISC Life Membership	✓
Train transport from Zurich or Geneva airports to Kandersteg	✓
Board and lodging during stay at KISC	✓

### • Furniture and fixtures

Benefits	US\$ 200- 900
Name plate on furniture or fixtures	✓

## MEDALLIONS



## ROOM SPONSORING

US\$ 50'000

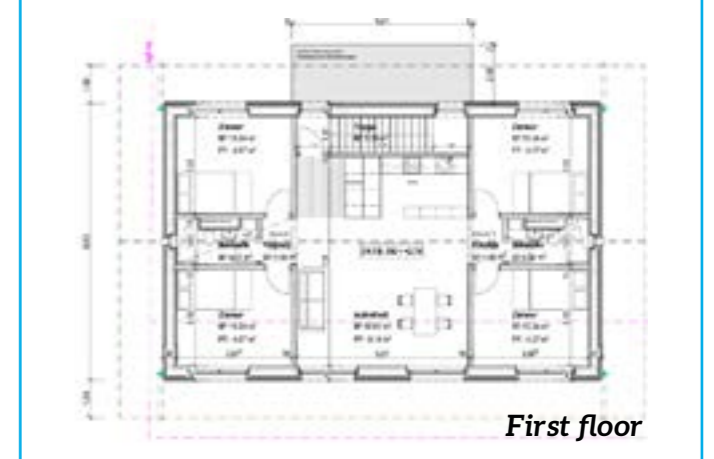
There are 8 rooms in the chalet which will carry the names of the 8 highest mountains in Switzerland:

- Dufourspitze (4'634 m)
- Dom (4'545 m)
- Weisshorn (4'505 m)
- Matterhorn (4'478 m)
- Grand Combin (4'314 m)
- Finsteraarhorn (4'274 m)
- Castor (4'223 m)
- Alphubel (4'206 m)

The sponsored rooms will also have a bedroom entrance plaque, as seen on the example below:



### ROOMS LAYOUT



## FURNITURE AND FIXTURES

ITEM	QUANTITY	PRICE	TOTAL
Bed	8	750	6'000
Sofa	4	750	3'000
Table	2	500	1'000
Appliances*	8	1000	8'000
Wardrobe	8	500	4'000
Chest of drawers	8	250	2'000
Kitchen cupboard	8	200	1'600
Bedroom arm chair	8	250	2'000
Outdoor table	1	500	500
Outdoor chair	10	200	2'000

\* Washing machine, fridge, tumble dryer, etc.

**TOTAL** 30'100



Example of name plate on fixtures

## HONG KONG SCOUT ASSOCIATION AND KISC FRIENDSHIP WALL

### Wall Of Fame

The names of each donor will be engraved on a dedicated plaque. There will be 3 sizes according to the chosen donor level: Bronze, Silver or Gold. For a donor of a room, there will be a larger plaque which can also, if desired by the donor, contain a photo fully engraved. The fundraising for this exciting project is undertaken in close cooperation with the Scout Association of Hong Kong, amongst others, and will feature a dedicated Wall of Fame.



## PAYMENT OPTIONS

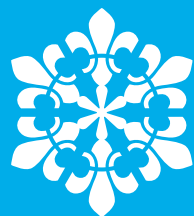
### Bank transfer

Bank Name: Berner Kantonalbank  
 Account holder: Stiftung Internationales Pfadfinderzentrum, 3718 Kandersteg  
 IBAN: CH38 0079 0016 8748 1106 8  
 BIC/SWIFT Code: KBBECH22  
 Reference: Staff accommodation donation

### Link

Link to the donation page: <https://go.kisc.ch/donate>





**Kandersteg**  
International  
Scout Centre